

APPENDIX 1



Viewpoint JP1 - From Banbury Hill looking southeast towards the Site



Viewpoint JP2 - From Banbury Hill permissive path looking east towards the Site



Viewpoint JP3 - From within the Site looking West



Viewpoint JP4 - Looking east towards the Site



Viewpoint JP5* - From Catsham Lane, looking east towards the site



Viewpoint JP6* - From B4437 looking northeast towards the Site

*Illustrative photographs - from West Waddy Adp Proposed Residential Development, Land North Of Jeffersons Piece, Charlbury - Landscape & Visual Impact Assessment (2017) Aspect Landscape Planning Ltd.



Viewpoint EB1 - From Barns Lane looking east towards the Site



Viewpoint EB2 - From within the Site looking outwards north



Viewpoint EB3 - from within the Site looking outwards south



Viewpoint EB4 - From within the Site looking outwards east



Viewpoint EB5 - From within the Site looking outwards northeast



Viewpoint EB6 - From Windrush Valley looking west towards the Site



Viewpoint EB7 - From Witney Street looking west towards the Site



Viewpoint EB8 - From public right of way looking southeastwards towards Site



Viewpoint EB9 - From Beech Grove Farm looking southwest towards the Site



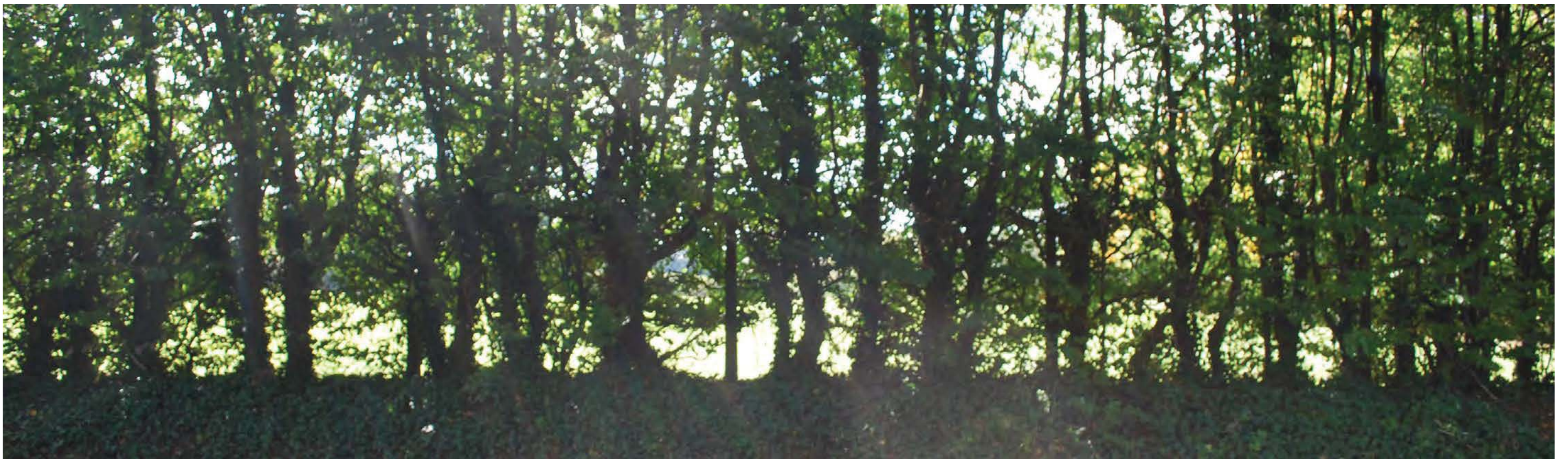
Viewpoint EB10 - From northeast of Fulbrook looking south towards Site



Viewpoint SUW1 - Looking southwest towards the Site



Viewpoint SUW2 - Looking southwest into the Site



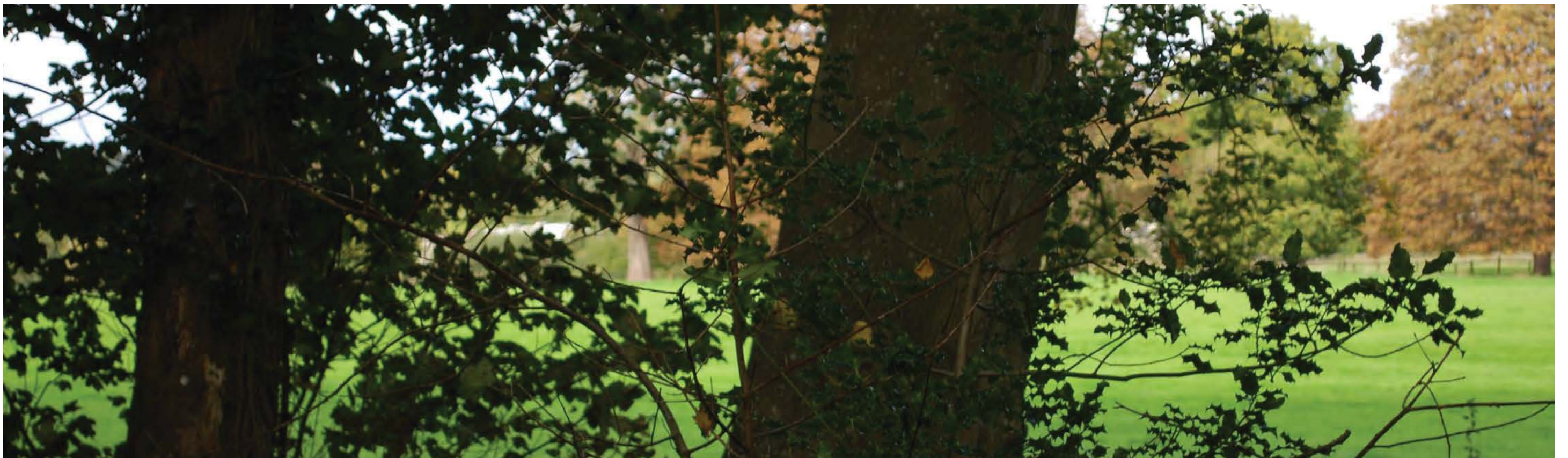
Viewpoint SUW3 - Looking south into the Site



Viewpoint SUW4 - Looking east towards the Site



Viewpoint SUW5 - Looking north towards the Site



Viewpoint SUW6 - Looking northwest towards the Site



Viewpoint SUW7 - Looking north towards the Site



Viewpoint ST1 - From a public right of way looking southwest towards the Site



Viewpoint ST2 - From Woodstock Road looking west towards the Site



Viewpoint ST3 - From the Oxfordshire Way looking north towards the Site



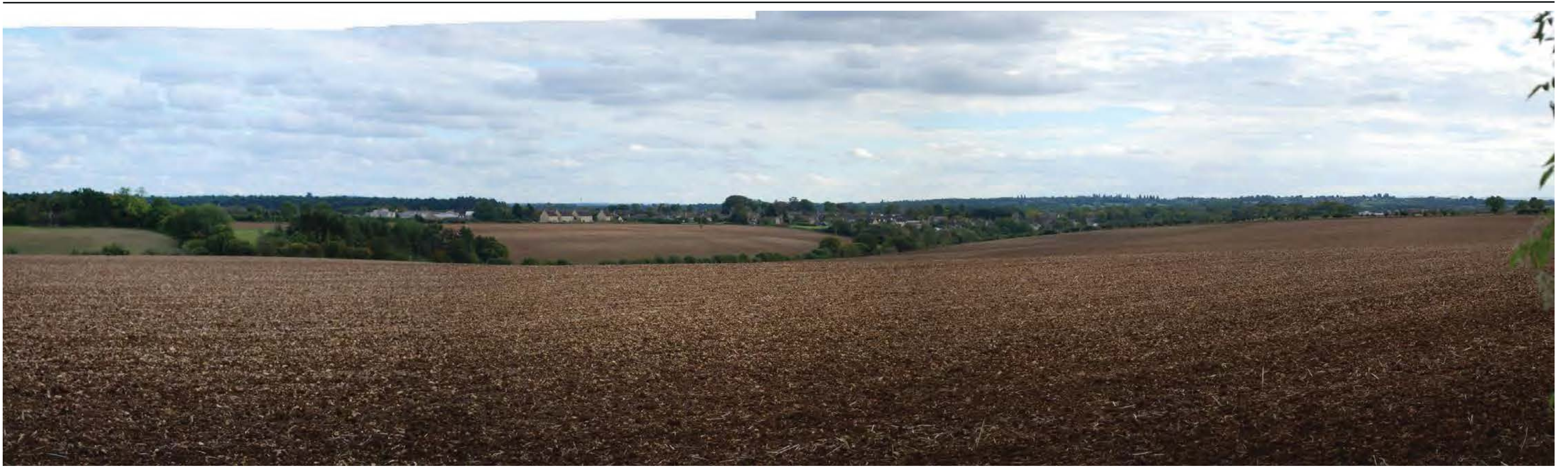
Viewpoint ST4 - From Woodstock Road looking northwest towards the Site



Viewpoint ST5 - From Woodstock Road looking northeast towards the Site



Viewpoint ST6 - From Stonesfield Riding looking south towards the Site



Viewpoint ST7 - From public right of way looking southeast towards the Site



Viewpoint EW1 - Looking south towards the Site



Viewpoint EW2 - Looking west into the Site



Viewpoint EW3 - From public right of way within the Site



Viewpoint EW4 - From public right of way looking east within the Site



Viewpoint EW5 - Looking north towards the Site



Viewpoint EW6 - Looking north east towards the Site



Viewpoint EW7 - Looking north



Viewpoint HRW1 - Looking southeast towards Site



Viewpoint HRW2 - Looking southeast within Site



Viewpoint HRW3 - Looking north within the Site



Viewpoint HRW4 - Looking southwest towards the Site



Viewpoint BRW1 - Looking southwest towards Site



Viewpoint BRW2 - Looking west into the Site



Viewpoint BRW3 - Looking southwest within the Site

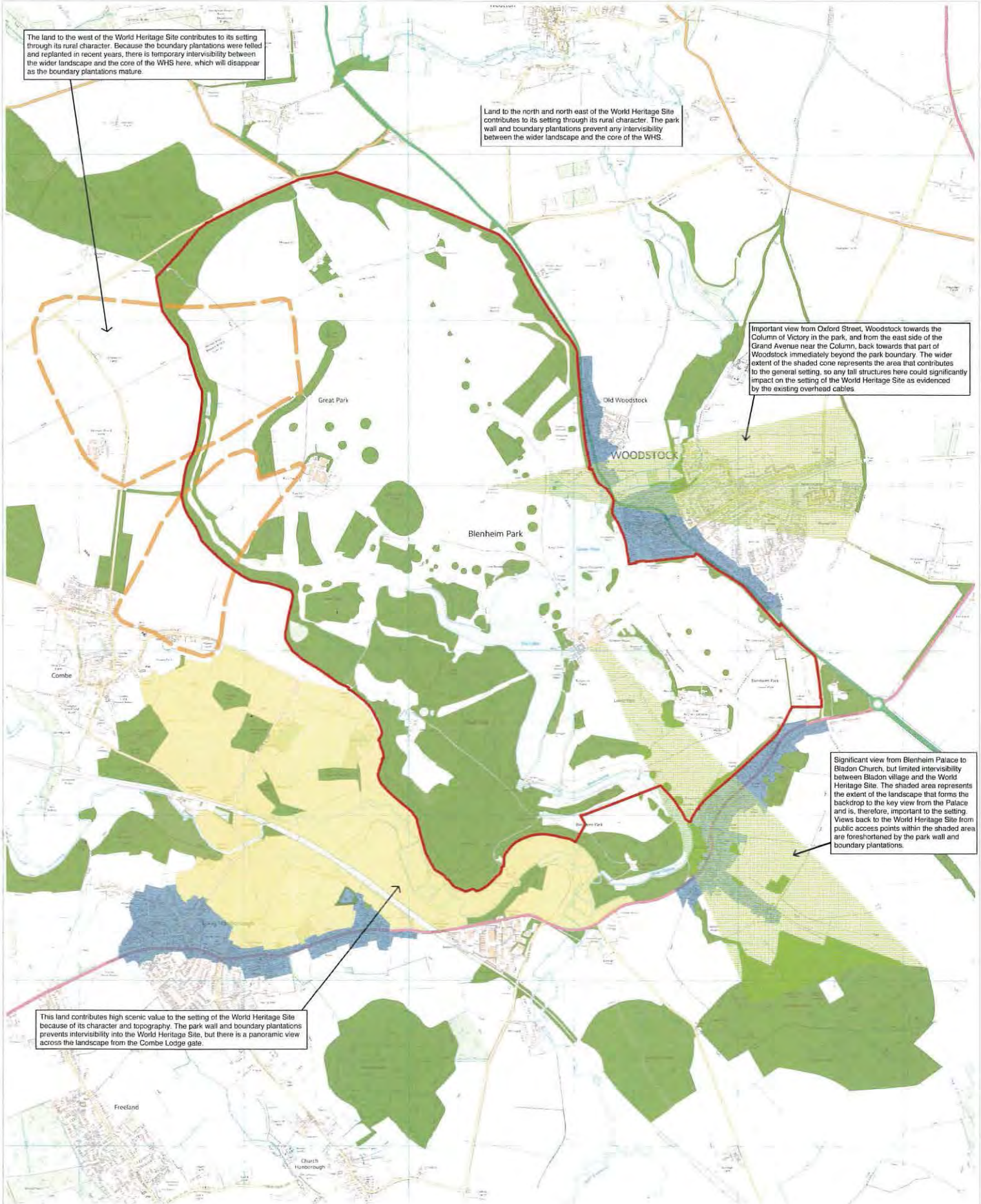


Viewpoint BRW4 - Looking northeast within Site



Viewpoint BRW6 - Looking west within the Site

APPENDIX 2



Key

-  World Heritage Site Boundary
-  Areas containing some intervisibility with the World Heritage Site.
-  Residential areas vulnerable to tall or prominent development.
-  Areas containing temporary intervisibility with the World Heritage Site.
-  Areas of high scenic value which contribute to the World Heritage Site, but with no intervisibility beyond the park wall and boundary plantations.
-  Woodlands and plantations contributing to the setting of the World Heritage Site.

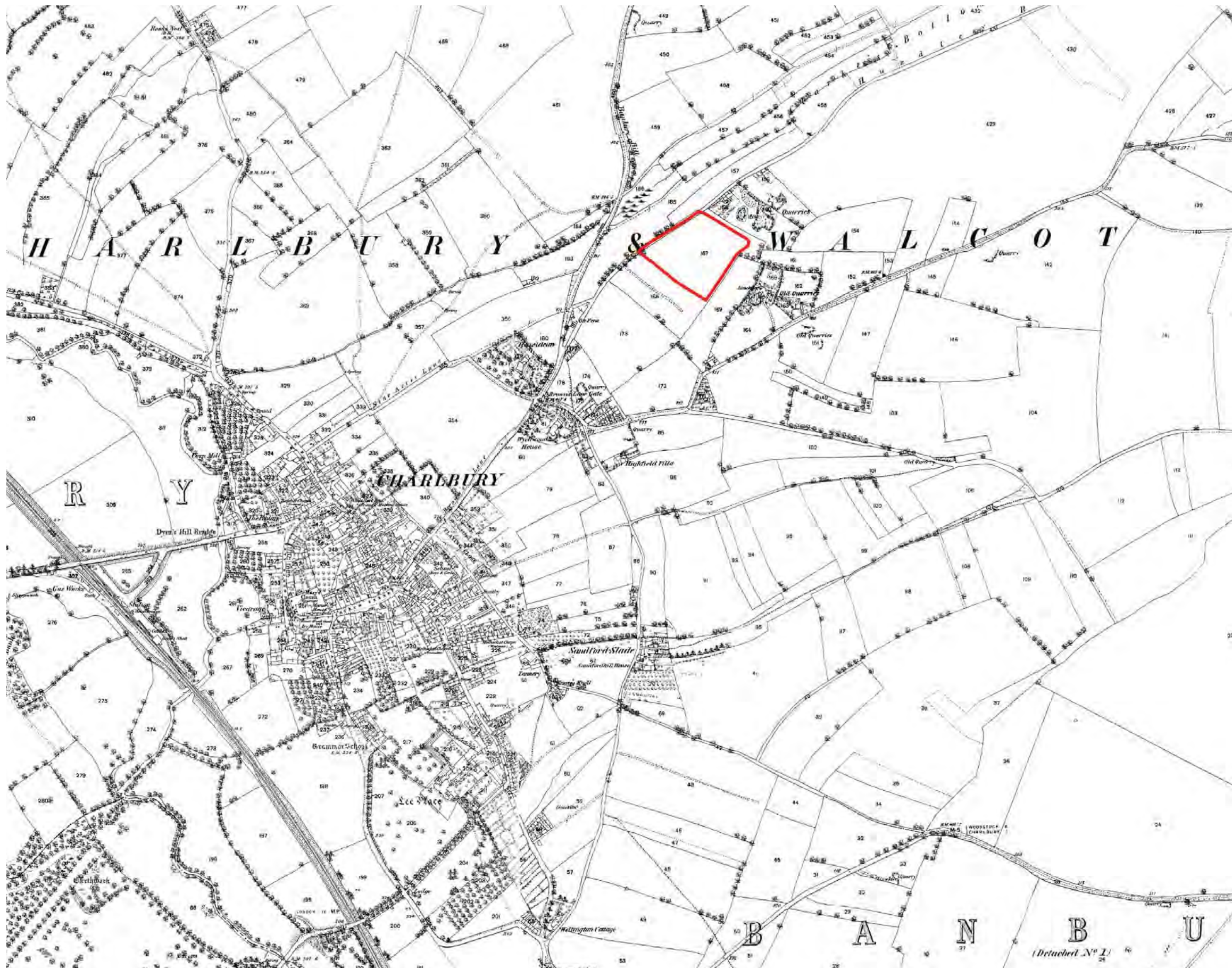


© Crown copyright and database rights
Ordnance Survey 0100031673

FIGURE 5 : CHARACTER OF THE SETTING

Not To Scale March 2017

APPENDIX 3

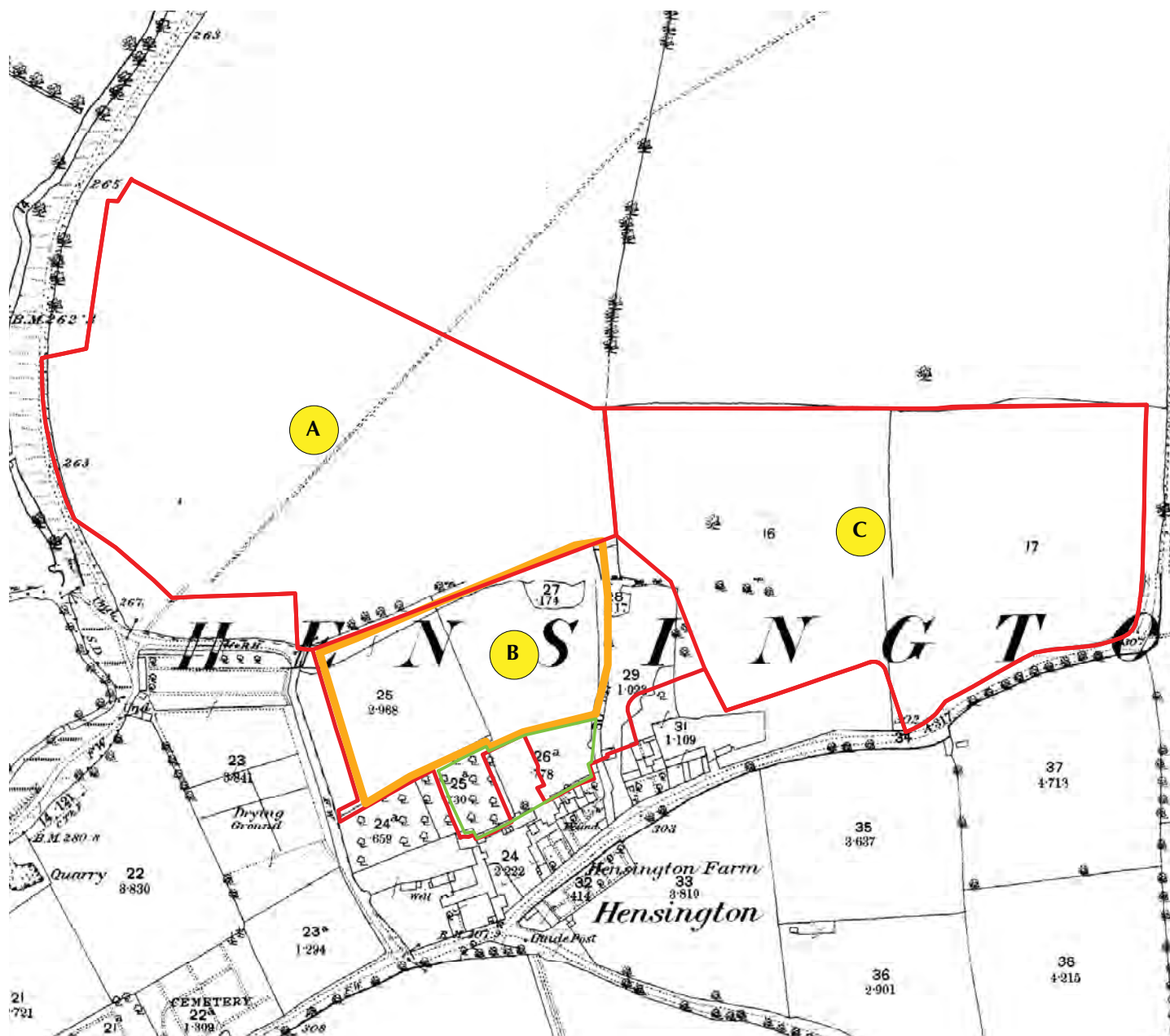


KEY
 Site Boundary



© Crown copyright and Landmark Information Group

APPENDIX 4



KEY

- Site Boundary
- Parcel B - Potential Development Area
- Landscape Buffer

© Crown copyright and Landmark Information Group



South East Studio The Old Crown High Street Blackboys Uckfield East Sussex TN22 5JR T 01825 891071 E mail@cbastudios.com W www.cbastudios.com

London Studio Woolyard 52 Bermondsey Street London SE1 3UD T 020 7089 6480

Directors D Watkins BSc MSc MRTPI - A Croft BA MA MCIFA

Senior Consultant C.J Blandford BA DipLD MIA FII